



SRAM[®]

2018 Code RSC / R



SRAM® LLC WARRANTY

EXTENT OF LIMITED WARRANTY

Except as otherwise set forth herein, SRAM warrants its products to be free from defects in materials or workmanship for a period of two years after original purchase. This warranty only applies to the original owner and is not transferable. Claims under this warranty must be made through the retailer where the bicycle or the SRAM component was purchased. Original proof of purchase is required. **Except as described herein, SRAM makes no other warranties, guaranties, or representations of any type (express or implied), and all warranties (including any implied warranties of reasonable care, merchantability, or fitness for a particular purpose) are hereby disclaimed.**

LOCAL LAW

This warranty statement gives the customer specific legal rights. The customer may also have other rights which vary from state to state (USA), from province to province (Canada), and from country to country elsewhere in the world.

To the extent that this warranty statement is inconsistent with the local law, this warranty shall be deemed modified to be consistent with such law, under such local law, certain disclaimers and limitations of this warranty statement may apply to the customer. For example, some states in the United States of America, as well as some governments outside of the United States (including provinces in Canada) may:

Preclude the disclaimers and limitations of this warranty statement from limiting the statutory rights of the consumer (e.g. United Kingdom).

Otherwise restrict the ability of a manufacturer to enforce such disclaimers or limitations.

For Australian customers:

This SRAM limited warranty is provided in Australia by SRAM LLC, 1000 W. Fulton Market, 4th Floor, Chicago, IL, 60607, USA. To make a warranty claim please contact the retailer from whom you purchased this SRAM product. Alternatively, you may make a claim by contacting SRAM Australia, 6 Marco Court, Rowville 3178, Australia. For valid claims SRAM will, at its option, either repair or replace your SRAM product. Any expenses incurred in making the warranty claim are your responsibility. The benefits given by this warranty are additional to other rights and remedies that you may have under laws relating to our products. Our goods come with guarantees that cannot be excluded under the Australian Consumer Law. You are entitled to a replacement or refund for a major failure and for compensation for any other reasonably foreseeable loss or damage. You are also entitled to have the goods repaired or replaced if the goods fail to be of acceptable quality and the failure does not amount to a major failure.

LIMITATIONS OF LIABILITY

To the extent allowed by local law, except for the obligations specifically set forth in this warranty statement, in no event shall SRAM or its third party suppliers be liable for direct, indirect, special, incidental, or consequential damages.

LIMITATIONS OF WARRANTY

This warranty does not apply to products that have been incorrectly installed and/or adjusted according to the respective SRAM user manual. The SRAM user manuals can be found online at sram.com, rockshox.com, avidbike.com, truvatv.com, or zipp.com.

This warranty does not apply to damage to the product caused by a crash, impact, abuse of the product, non-compliance with manufacturers specifications of usage or any other circumstances in which the product has been subjected to forces or loads beyond its design.

This warranty does not apply when the product has been modified, including, but not limited to any attempt to open or repair any electronic and electronic related components, including the motor, controller, battery packs, wiring harnesses, switches, and chargers.

This warranty does not apply when the serial number or production code has been deliberately altered, defaced or removed.

This warranty does not apply to normal wear and tear. Wear and tear parts are subject to damage as a result of normal use, failure to service according to SRAM recommendations and/or riding or installation in conditions or applications other than recommended.

Wear and tear parts are identified as:

Dust seals	Stripped threads/bolts (aluminium, titanium, magnesium or steel)	Handlebar grips	Transmission gears
Bushings	Brake sleeves	Shifter grips	Spokes
Air sealing o-rings	Brake pads	Jockey wheels	Free hubs
Glide rings	Chains	Disc brake rotors	Aero bar pads
Rubber moving parts	Sprockets	Wheel braking surfaces	Corrosion
Foam rings	Cassettes	Bottomout pads	Tools
Rear shock mounting hardware and main seals	Shifter and brake cables (inner and outer)	Bearings	Motors
Upper tubes (stanchions)		Bearing races	Batteries
		Pawls	

Notwithstanding anything else set forth herein, the battery pack and charger warranty does not include damage from power surges, use of improper charger, improper maintenance, or such other misuse.

This warranty shall not cover damages caused by the use of parts of different manufacturers.

This warranty shall not cover damages caused by the use of parts that are not compatible, suitable and/or authorised by SRAM for use with SRAM components.

This warranty shall not cover damages resulting from commercial (rental) use.



SAFETY FIRST!

We care about YOU. Please, always wear your safety glasses and protective gloves when servicing SRAM® products.

Protect yourself! Wear your safety gear!

TABLE OF CONTENTS

SRAM® CODE™ BRAKE SYSTEMS SERVICE	5
SERVICE PROCEDURES.....	6
SRAM® CODE™ BRAKES CALIPER SERVICE	7
PARTS, TOOLS AND SUPPLIES	7
CALIPER EXPLODED VIEW	7
CALIPER BRAKE PAD REMOVAL.....	8
CALIPER PISTON REMOVAL.....	9
CALIPER PISTON INSTALLATION	13
CODE™ RSC® LEVER SERVICE	16
PARTS AND TOOLS NEEDED FOR SERVICE.....	16
CODE RSC LEVER EXPLODED VIEW	16
LEVER BLADE REMOVAL.....	17
PISTON ASSEMBLY REMOVAL	20
PISTON ASSEMBLY INSTALLATION.....	22
LEVER BLADE INSTALLATION	26
CODE™ R® LEVER SERVICE	30
PARTS AND TOOLS NEEDED FOR SERVICE.....	30
CODE R LEVER EXPLODED VIEW.....	30
LEVER BLADE REMOVAL.....	31
PISTON ASSEMBLY REMOVAL	34
PISTON ASSEMBLY INSTALLATION.....	36
LEVER BLADE INSTALLATION	37

We recommend that you have your SRAM Code components serviced by a qualified bicycle mechanic. Servicing SRAM components requires knowledge of bicycle mechanics as well as the special tools and lubricants/fluids used for service.

SRAM brake systems need to be serviced periodically to optimize braking function. If brake fluid is leaking from any area of the brake there may be damage or wear and tear to the internal moving parts. If the system has been contaminated with the wrong fluid there may be damage to all rubber and plastic internal parts. If your brake was damaged in a crash there may be damage to the lever blade, pushrod, and housing assemblies. Inspect and replace these parts to restore proper brake function.

Visit www.sram.com/service for the latest SRAM Spare Parts catalog and technical information. For order information, please contact your local SRAM distributor or dealer.



For recycling and environmental compliance information, please visit www.sram.com.

Information contained in this publication is subject to change at any time without prior notice. Your product's appearance may differ from the pictures contained in this publication.

SAFETY INSTRUCTIONS

Do not use mineral oil or DOT 5 fluid.

If the brake system has been contaminated with mineral oil or DOT 5 fluid, flush all of the parts with soapy water, rinse them with clean water, then allow all the parts to dry prior to rebuilding. Install new seals, a new bladder, and replace the hose.

For best results, use only SRAM High-Performance DOT 5.1 fluid. If SRAM brake fluid is not available, only use DOT 5.1 or 4 fluid.

Use only DOT compatible grease.

Always wear safety glasses and nitrile gloves when working with DOT fluid.

Used DOT fluid should be recycled or disposed of in accordance to local and federal regulations.

Never pour DOT fluid down a sewage or drainage system or into the ground or a body of water.

Do not allow any brake fluid to come in contact with the brake pads. If this occurs, the pads are contaminated and must be replaced.

Place an oil pan on the floor underneath the area where you will be working on the brake.

Servicing your brakes removes all of the brake fluid from the system. You must bleed your brakes after you service the brake system. Consult the *SRAM MTB Disc Brake Hose Shortening and Bleed Manual* at www.sram.com/service.

NOTICE

Before beginning service, thoroughly clean the exterior of the product to avoid contamination of internal sealing part surfaces.

DOT fluids will damage painted surfaces. If any fluid comes in contact with a painted surface (e.g. your frame) or printing on the brakes, wipe it off immediately and clean it with isopropyl alcohol or water. Damage to painted and/or printed surfaces by DOT fluid is not covered under warranty.

Service Procedures

The following procedures should be performed throughout service, unless otherwise specified.

Clean the part with isopropyl alcohol and a clean, lint-free rag.

Clean the sealing surface on the part and inspect it for scratches.



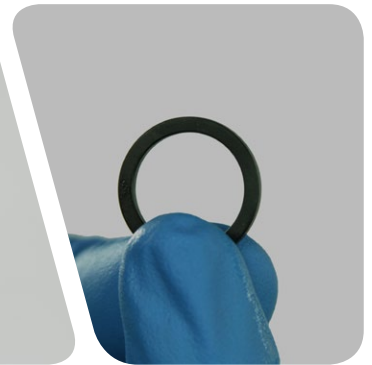
Replace the o-ring or seal with a new one from the service kit.

Use your fingers, a ziptie, or a pick to pierce and remove the old seal or o-ring.

Apply DOT grease to the new seal or o-ring when instructed.

NOTICE

Do not scratch any sealing surfaces when servicing the product. Scratches can cause leaks. Consult the spare parts catalog to replace the damaged part.



Use aluminum soft jaws when placing a part in a bench vise.

Tighten the part with a torque wrench to the torque value listed in the red bar. When using a crowfoot socket and torque wrench, install the crowfoot socket at 90 degrees to the torque wrench.



Parts, Tools and Supplies

Parts

- SRAM Brake Pad Kit
- Caliper Piston Kit (includes 2-16 mm & 2-15mm caliper pistons, seals & o-rings) - Code R B1/RSC A1

Safety and Protection Supplies

- Clean, lint-free rags
- Nitrile gloves
- Oil pan
- Safety glasses

Lubricants and Fluids

- Isopropyl alcohol
- SRAM High-Performance DOT 5.1 fluid. If SRAM fluid is not available, only use DOT 5.1 or 4 fluid.
- SRAM DOT grease. If SRAM DOT grease is not available only use a DOT compatible grease.

Bicycle Tools

- Bicycle work stand
- Bench vice
- Aluminum soft jaws

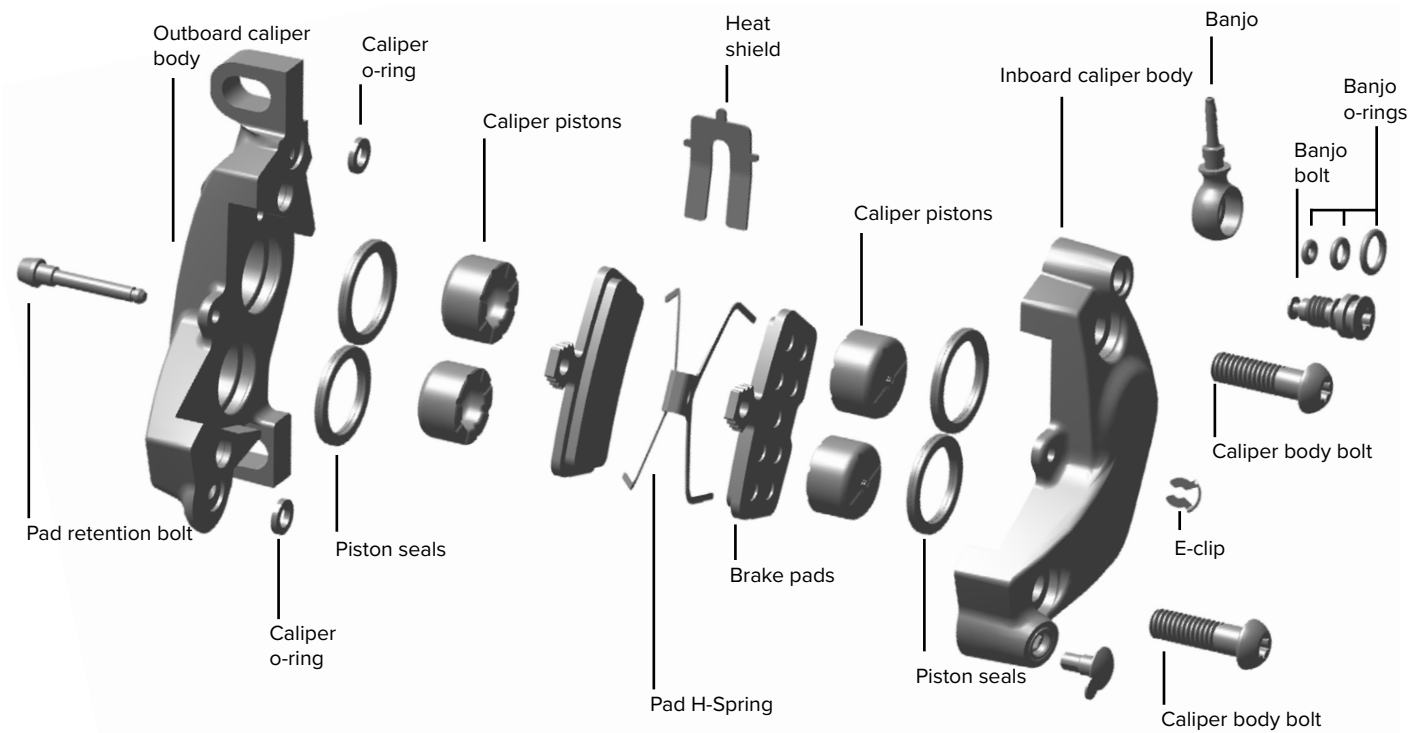
Common Tools

- 2.5 and 5 mm hex wrenches
- Needle nose pliers
- Pick with a 90 degree bent tip
- T25 TORX® wrench
- T25 TORX bit socket
- Torque wrench
- Digital caliper

SRAM Tools

- SRAM Brake Bleed Kit (includes: Bleed Block and Bleeding Edge™ Fitting)
- Pad Spreader Tool (1.8 mm) - Guide/Code Caliper

Caliper Exploded View



Caliper Brake Pad Removal

- 1 Clamp the bicycle into a bicycle work stand and remove the wheel.



- 2 Remove the E-clip from the pad retention bolt.
Remove the pad retention bolt from the caliper.



- 3 Remove the brake pads and pad H-spring from the caliper.

NOTICE

If the brake pad thickness is less than 3 mm then replace the pads.



NOTICE

DOT fluid will damage painted surfaces. If any fluid comes in contact with a painted surface (e.g. your frame) or printing on the brakes, wipe it off immediately and clean it with isopropyl alcohol or water. Damage to painted and/or printed surfaces by DOT fluid is not covered under warranty.

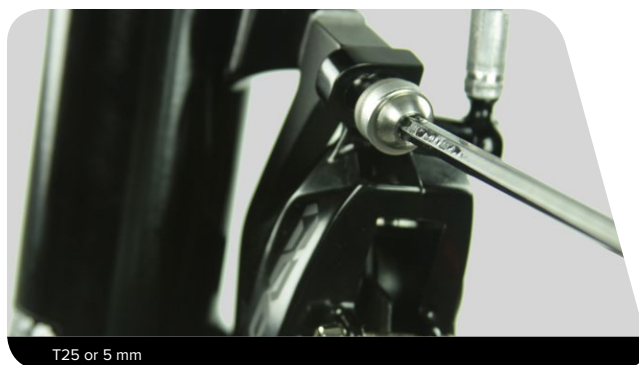
- 1** Install the pad retention bolt.
Insert the pad spreader so that it snaps onto the pad retention bolt.



- 2** Squeeze the brake lever repeatedly to advance the pistons, and stop when they contact the pad spreader.



- 3** Remove the caliper, mounting bolts, and hardware.



4 Remove the lever and clamp.



5 Remove the banjo bolt and hose, then remove the banjo bolt from the banjo.



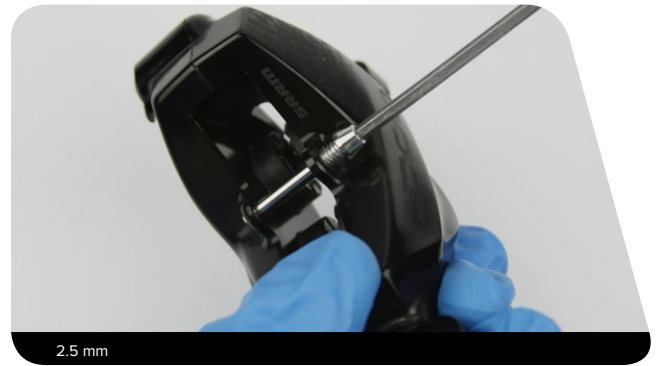
6 Remove the banjo bolt o-rings and replace with new o-rings.



7 Remove the pad spreader.



8 Remove the pad retention bolt.



9 Place the caliper in a vice with soft jaws, then remove each caliper body bolt.



10 Separate the caliper body halves.
Set the heat shield aside.



11 Remove the caliper o-rings from the outboard side of the caliper.



12 Remove the pistons from each caliper body half.



13 Remove the piston seals from each caliper body half, then clean the caliper halves. Apply a small amount of SRAM® High-Performance DOT 5.1 fluid to new seals and install into each caliper body half.

⚠ CAUTION

Do not scratch the seal gland with the pick. Scratches could cause fluid to leak when the brake is applied, which will contaminate the brake pads and could lead to a brake failure.

NOTICE

For the best braking performance, use only SRAM High-Performance DOT 5.1 fluid. If SRAM fluid is not available, use only DOT 5.1 or 4 fluid. Do not use grease. Grease will prevent the pistons from fully retracting into the caliper bores, which will reduce braking performance.



NOTICE

DOT fluid will damage painted surfaces. If any fluid comes in contact with a painted surface (e.g. your frame) or printing on the brakes, wipe it off immediately and clean it with isopropyl alcohol or water. Damage to painted and/or printed surfaces by DOT fluid is not covered under warranty.

- 1 Inspect the caliper pistons for damage and replace the pistons if necessary.

Apply a small amount of SRAM® High-Performance DOT 5.1 fluid to the circumference of each piston. Install the pistons into the caliper bores.

NOTICE

For the best braking performance, use only SRAM High-Performance DOT 5.1 fluid. If SRAM fluid is not available, use only DOT 5.1 or 4 fluid. Do not use grease. Grease will prevent the pistons from fully retracting into the caliper bores, which will reduce braking performance.

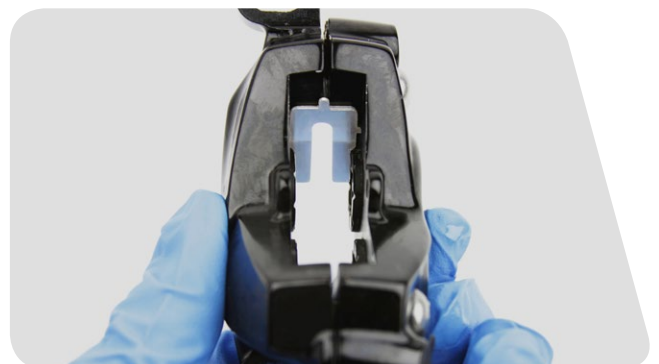


- 2 Add a small amount of DOT compatible grease onto the new caliper o-rings, then install them into the caliper.



- 3 Align the caliper body halves, then thread each body bolt into the caliper two full turns.

Install the heat shield so that the heat shield tabs are in the caliper alignment holes on each side of the caliper.



- 4 Align the caliper body halves. Ensure the heat shield remains pressed against the caliper. Tighten each body bolt.

NOTICE

Visually inspect the caliper to confirm the caliper o-rings are not protruding. If an o-ring is visible, then remove the caliper body bolts and reinstall. Pinched o-rings may cause leaks.



- 5 Insert the bleed block into the caliper.



- 6 Install the pad retention bolt.

WARNING

You must bleed your brakes before reinstalling the brake pads. Installing the brake pads prior to bleeding the brakes could contaminate the brake pads and lead to a brake failure.



- 7 Install the banjo and hose, then hand tighten the banjo bolt.

NOTICE

Visually inspect the banjo bolt hole to confirm the o-ring is not pinched or protruding. If the o-ring is visible, then remove the bolt and reinstall. Pinched o-rings may cause leaks.



- 8 Tighten the banjo bolt and hose.
Clean the caliper.



⚠ CAUTION

Servicing your brakes removes all of the fluid from the system.

You must bleed the brakes after you service the brake caliper and/or lever.

For brake bleed and brake hose shortening instructions, [visit www.sram.com/service](http://www.sram.com/service).

Parts and Tools Needed for Service

Parts

- Lever Internals Guide™ - RSC/Ultimate/ Code RSC
- Hydraulic Disc Brake Hose Fitting Kit (includes 1 threaded hosebarb, 1 red comp fitting) Qty 1 - Stealthamajig

Safety and Protection Supplies

- Clean, lint-free rags
- Nitrile gloves
- Oil pan
- Safety glasses

Lubricants and Fluids

- Isopropyl alcohol
- Loctite® Blue 242®
- SRAM® High-Performance DOT 5.1 fluid. If SRAM fluid is not available, only use DOT 5.1 or 4 fluid.
- SRAM DOT grease. If SRAM DOT grease is not available only use a DOT compatible grease.

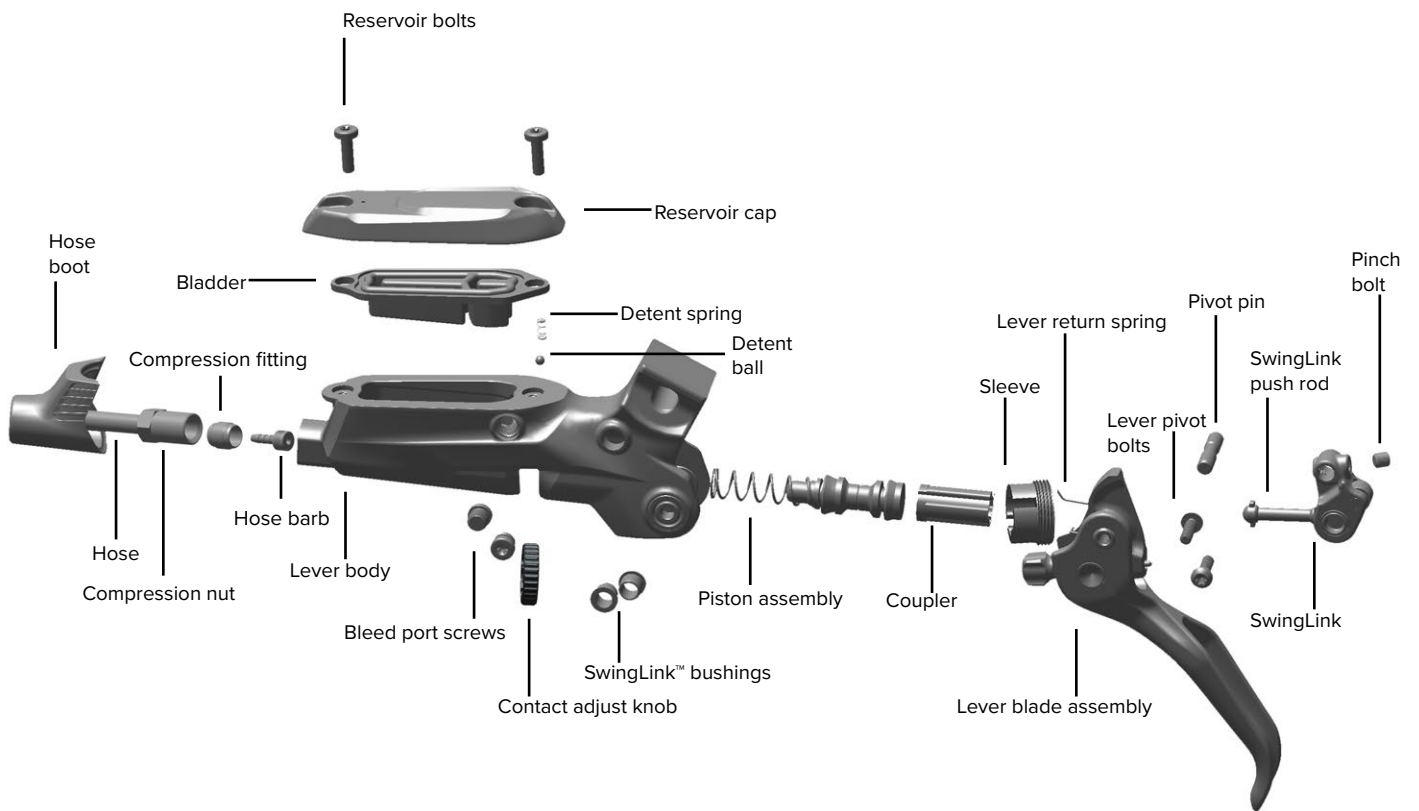
Common Tools

- 2.5 & 4 mm hex wrenches
- Needle nose pliers
- Pick with a 90 degree bent tip
- T8, T10, & T25 TORX® wrench
- T8 & T10 TORX bit socket
- 8 mm flare nut wrench
- 8 mm flare nut crowfoot wrench
- Torque wrench
- Magnet

SRAM Tools

- SRAM Lever Internals Assembly Tool (for setting pushrod distance and installing internals)

Code RSC Lever Exploded View



NOTICE

DOT fluid will damage painted surfaces. If any fluid comes in contact with a painted surface (e.g. your frame) or printing on the brakes, wipe it off immediately and clean it with isopropyl alcohol or water. Damage to painted and/or printed surfaces by DOT fluid is not covered under warranty.

- 1** Pull the hose boot away from the brake body to expose the compression nut, then slide the boot down the brake hose.



- 2** Remove the hose compression nut. Pull the brake hose and compression fitting from the brake lever body.



- 3** Remove the reservoir cap bolt nearest to the lever blade.



4 Use a magnet to remove the detent spring and ball.



5 Remove the remaining reservoir cap bolt, then remove the reservoir cap and bladder.



6 Pour the brake fluid into an oil pan. Squeeze the lever blade to force any remaining brake fluid out of the lever body.



7 Separate the bladder from the reservoir cap.
Clean the reservoir cap, then discard the bladder.



8 Remove the lever pivot bolts.



9 Remove the lever blade assembly from the lever body.



Piston Assembly Removal

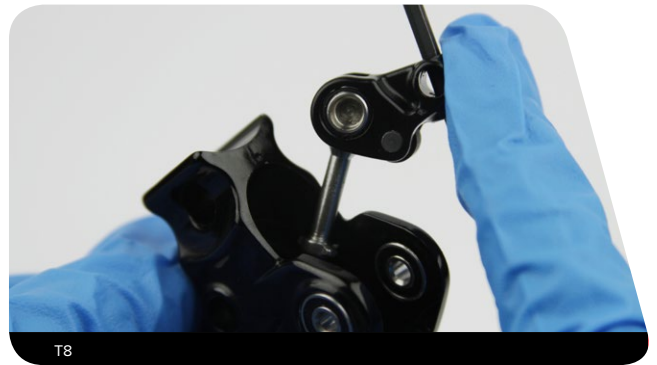
- 1 Remove the SwingLink™ pinch bolt.



- 2 Push out the SwingLink pivot pin.



- 3 Remove the SwingLink.



- 4 Remove the SwingLink bushings from both sides of the lever.

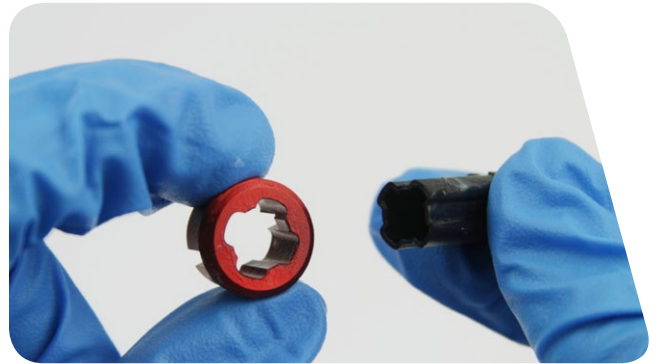


- 5** Use a SRAM® Lever Internals Assembly Tool to unthread the piston sleeve and coupler. Insert the SRAM Lever Internals Assembly Tool into the lever body and align the key slot of the tool with the piston coupler. Use the tool to unthread the sleeve and remove the sleeve and coupler.

If the piston sleeve and coupler are stuck in the lever body, use needle nose pliers to gently remove.



- 6** Remove the sleeve from the coupler.
Clean the sleeve and coupler.



- 7** Place a rag over the lever body to prevent the piston assembly from ejecting.
Push out the contact adjust knob.

⚠ CAUTION - EYE HAZARD

Use safety glasses.

The piston assembly is spring loaded and will forcefully eject from the lever body when the contact knob is removed.



- 8** Remove the piston assembly from the lever body.
Clean the lever body.



NOTICE

DOT fluid will damage painted surfaces. If any fluid comes in contact with a painted surface (e.g. your frame) or printing on the brakes, wipe it off immediately and clean it with isopropyl alcohol or water. Damage to painted and/or printed surfaces by DOT fluid is not covered under warranty.

- 1** Submerge a new piston in SRAM® High-Performance DOT 5.1 fluid. You can also use SRAM DOT Assembly Grease, or DOT 5.1 or 4 compatible grease, as a lubricant.



- 2** Install the new piston assembly into the lever body. Clean the lever body.



- 3** Use the SRAM® Lever Internals Assembly Tool to press the piston into the lever body, while inserting the contact adjust knob into the contact adjust slot. *You should hear a pop sound when the contact knob is fully seated in place.*



- 4** Place the sleeve on the coupler.
The sleeve threads must be oriented toward the base of the coupler.



- 5** Use the SRAM® Lever Internals Assembly Tool to engage and thread the sleeve and coupler onto the piston assembly.
Engage the slots on the sleeve with the contact adjust knob and continue to thread the SRAM Guide Lever Internals Assembly Tool in a clockwise rotation until it stops.



- 6** Install the SwingLink™ bushings.
If the SwingLink bushings fall out easily, apply a small amount of SRAM DOT grease to the bushings to help hold them in place.



- 7** Place the SwingLink onto the SRAM Lever Internals Assembly Tool to adjust the length of the push rod.
Adjust the length of the push rod: turn counter-clockwise to make the push rod fit more snug in the tool, turn clockwise to make the push rod more loose in the tool.



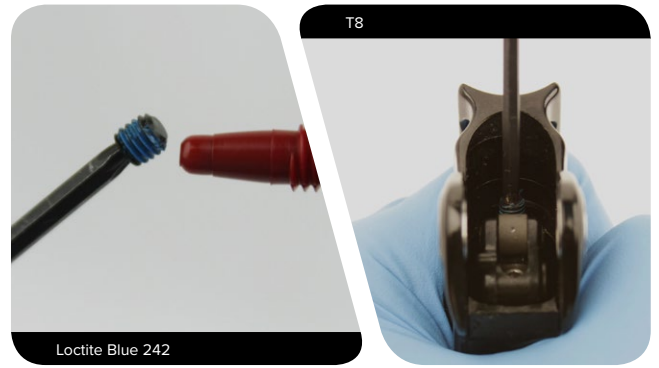
- 8** Remove the SwingLink™ from the SRAM® Lever Internals Assembly Tool and place the push rod into the coupler sleeve.



- 9** Align the holes of the SwingLink and the SwingLink bushings, then press the pivot pin into the hole until it is flush with the lever body.



10 Apply a small amount of Loctite® Blue 242® onto the SwingLink™ pinch bolt.



11 Tighten the SwingLink pinch bolt.



NOTICE

DOT fluid will damage painted surfaces. If any fluid comes in contact with a painted surface (e.g. your frame) or printing on the brakes, wipe it off immediately and clean it with isopropyl alcohol or water. Damage to painted and/or printed surfaces by DOT fluid is not covered under warranty.

- 1** Install the lever blade.
Line up the pivot holes of the lever blade with the pivot holes in the lever body.



Make sure the lever return spring is seated properly in the lever. The outboard end of the spring must press against the lever blade, while the inboard end of the springs must press against the lever body. If the return spring is not seated properly, you will not be able to adjust the reach of the lever blade.



- 2** Apply a small amount of Loctite® Blue 242® onto each pivot bolt.



Loctite Blue 242

- 3** Thread each pivot bolt into the bearings on each side of the lever body.

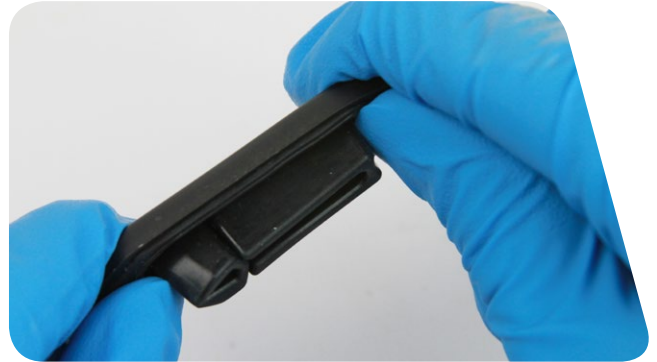


T10

4 Tighten each pivot bolt.



5 Press a new bladder into the reservoir cap, make sure the bladder is properly seated into the reservoir cap.



6 Insert the reservoir cap/bladder assembly onto the lever body.



7 Install a new detent ball followed by a detent spring into the lever body reservoir hole closest to the lever blade.



8 Install each reservoir cap bolt, then tighten.



9 Cut the hose to install a new barb and compression fitting.



10 Apply DOT grease to the hose barb threads. Thread the hose barb into the hose until it is flush with the end of the hose.

NOTICE

Do not overtighten the hose barb. Overtightening may cause damage to the hose liner.



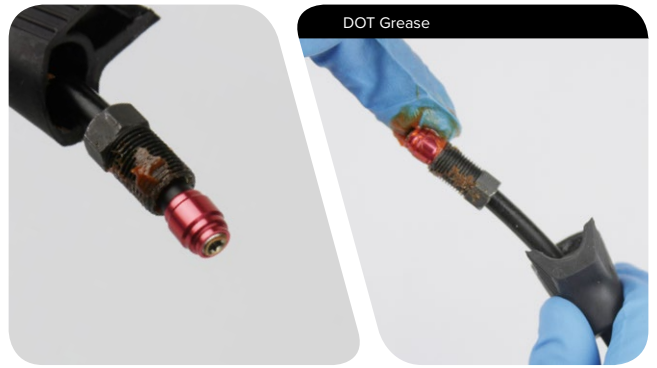
11 Install the compression nut onto the hose.



- 12** Thread the compression fitting over the hose barb, counter-clockwise, until it is flush or slightly lower than the hose barb.

The compression fitting is reverse threaded.

Apply DOT grease to the outside of the compression fitting and the threads of the compression nut.



- 13** Install the compression fitting and nut into the lever.



- 14** Tighten the compression nut.
Clean the lever.



⚠ CAUTION

Servicing your brakes removes all of the fluid from the system. You must bleed the brakes after you service the brake caliper and/or lever. For brake bleed, brake hose shortening, and brake pad replacement instructions, [visit www.sram.com/service](http://www.sram.com/service).

Parts and Tools Needed for Service

Parts

- Lever Internals Guide™ - R/RE/DB5/ Code R Qty 1
- Hydraulic Disc Brake Hose Fitting Kit (includes 1 threaded hosebarb, 1 red comp fitting) Qty 1 - Stealthamajig

Safety and Protection Supplies

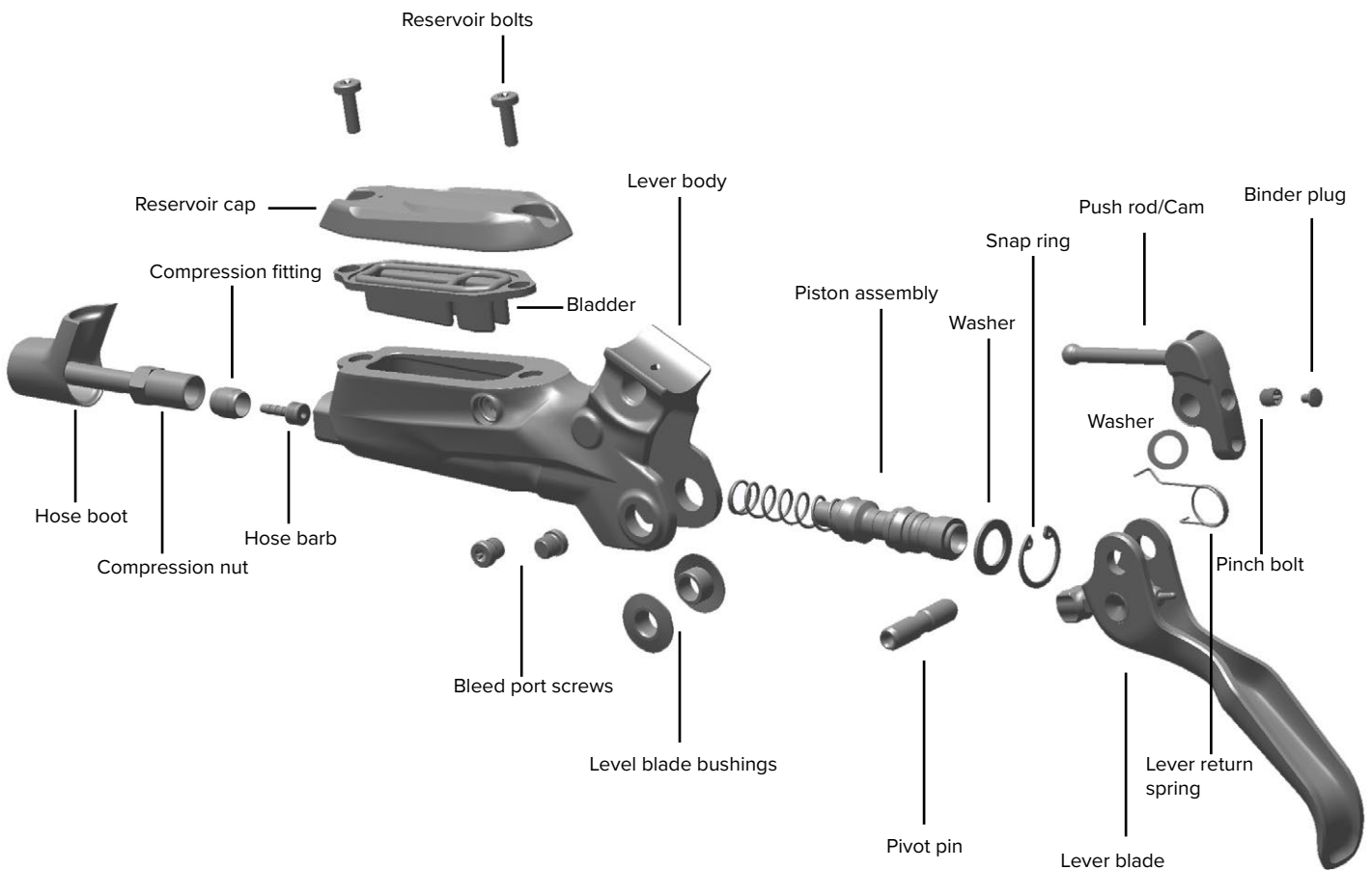
- Clean, lint-free rags
- Nitrile gloves
- Oil pan
- Safety glasses

Lubricants and Fluids

- Isopropyl alcohol
- Loctite® Blue 242®
- SRAM High-Performance DOT 5.1 fluid. If SRAM fluid is not available, only use DOT 5.1 or 4 fluid.
- SRAM DOT grease. If SRAM DOT grease is not available only use a DOT compatible grease.

Common Tools

- 2 mm & 4 mm hex wrenches
- Needle nose pliers
- Pick with a 90 degree bent tip
- T8, T10, & T25 TORX® wrench
- T8 & T10 TORX bit socket
- 8 mm flare nut wrench
- 8 mm flare nut crowfoot wrench
- Torque wrench



NOTICE

DOT fluid will damage painted surfaces. If any fluid comes in contact with a painted surface (e.g. your frame) or printing on the brakes, wipe it off immediately and clean it with isopropyl alcohol or water. Damage to painted and/or printed surfaces by DOT fluid is not covered under warranty.

- 1** Pull the hose boot away from the brake body to expose the compression nut, then slide the boot down the brake hose.



- 2** Remove the hose compression nut.
Pull the brake hose and compression fitting from the brake lever body.



- 3** Remove each reservoir cap bolt.



- 4** Remove the reservoir cap and bladder from the lever body.

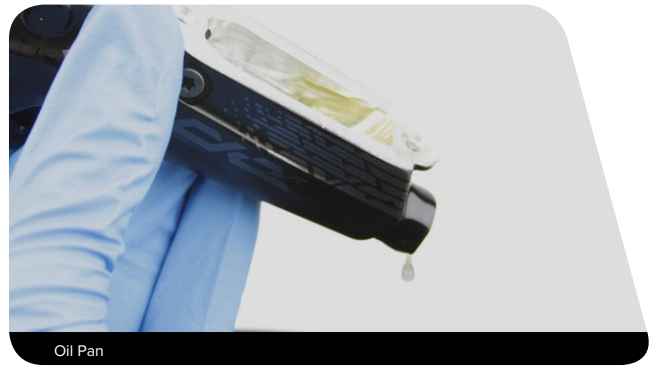


- 5** Pour the fluid from the brake lever body into a pan. Squeeze the lever blade to force any remaining brake fluid out of the lever body.
Clean the lever.

NOTICE

If the system has been contaminated with mineral oil or DOT 5 fluid, flush all the parts with soapy water, rinse, and allow all parts to dry prior to rebuilding. Install all new seals and a new hose.

For best braking performance, use only SRAM® High-Performance DOT 5.1 fluid. If SRAM fluid is not available, use only High-Performance DOT 5.1 fluid or 4 fluid.



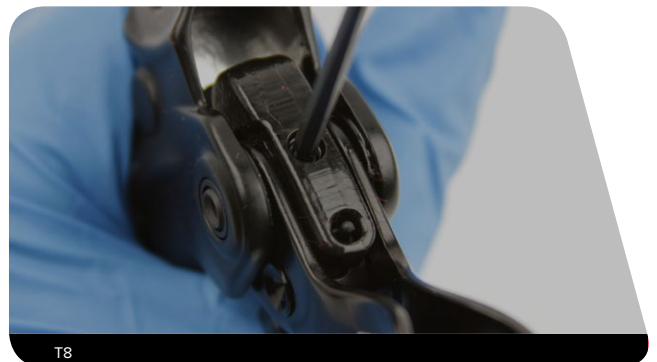
- 6** Separate the bladder from the reservoir cap.
Clean the reservoir cap.



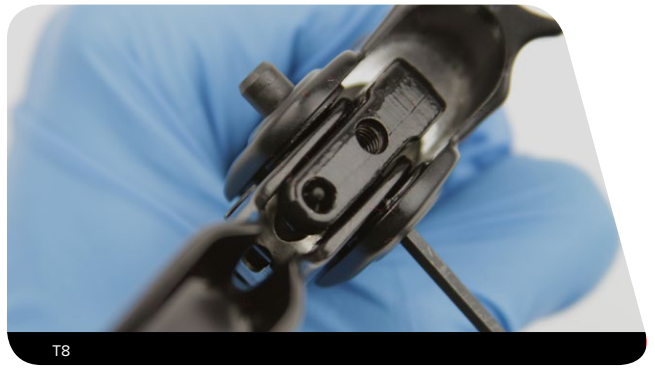
- 7** Remove the binder plug.



- 8** Remove the pinch bolt.



9 Push out the pivot pin.



10 Remove the lever blade.



The R lever blade has four pieces; the lever blade, the cam/push rod assembly, a washer, and the lever return spring. To hold all pieces together, reinstall the lever pivot pin and gently set aside.



NOTICE

DOT fluid will damage painted surfaces. If any fluid comes in contact with a painted surface (e.g. your frame) or printing on the brakes, wipe it off immediately and clean it with isopropyl alcohol or water. Damage to painted and/or printed surfaces by DOT fluid is not covered under warranty.

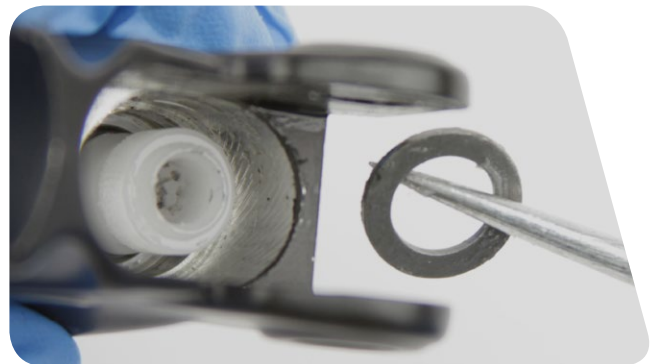
- 1 Remove the lever blade bushings.



- 2 Place the tips of the pliers into the eyelets of the snap ring, then squeeze the pliers to remove the snap ring.



- 3 Remove the washer.



- 4** Remove the piston assembly.
Clean the lever body.



NOTICE

DOT fluid will damage painted surfaces. If any fluid comes in contact with a painted surface (e.g. your frame) or printing on the brakes, wipe it off immediately and clean it with isopropyl alcohol or water. Damage to painted and/or printed surfaces by DOT fluid is not covered under warranty.

- 1** Submerge a new piston in SRAM® High-Performance DOT 5.1 fluid. You can also use SRAM DOT Assembly Grease, or DOT 5.1 or 4 compatible grease, as a lubricant.



- 2** Install the new piston assembly into the lever body. Clean the lever body.



- 3** Install the washer on the piston assembly.



- 4** Push the piston assembly into the lever body and secure the snap ring in its groove. Orient the snap ring eyelets opposite the opening in the lever body.

Use a 10 mm deep socket against the snap ring to push the piston/washer/snap ring assembly into the lever body and insure it is seated in the lever body.



Lever Blade Installation

- 1 Insert the lever blade bushings into both sides of the lever.

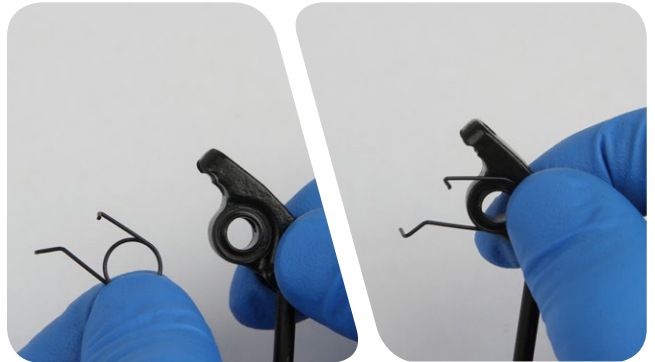


Steps to reassemble the R lever blade assembly:

Place the washer on the cam/push rod assembly. Apply a small amount of SRAM® DOT grease to hold the washer in place.



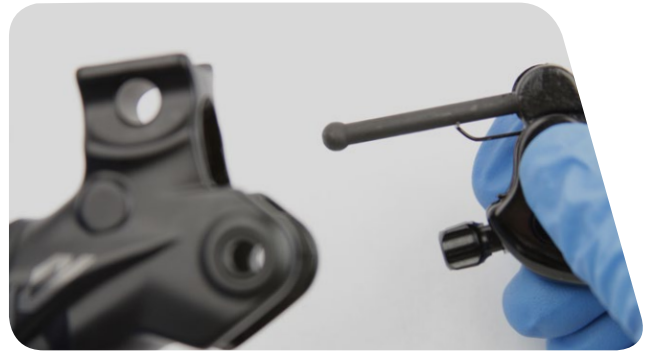
Install the lever return spring onto the cam/push rod assembly.



While holding the cam/push rod/lever return spring/washer in place, install the assembly onto the lever blade and proceed to step 2.



- 2** Insert the lever blade assembly into the lever body, placing the push rod into the piston and lever return spring on the lever body.



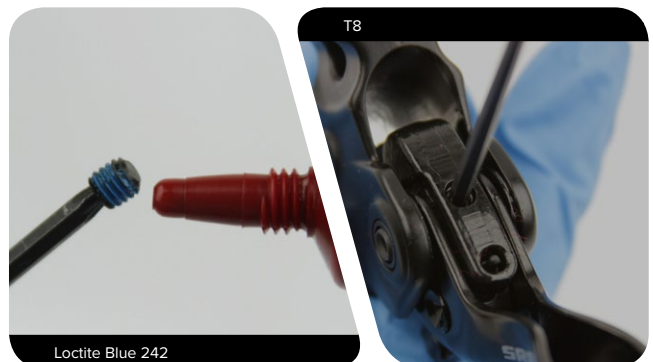
Make sure the lever return spring is seated properly in the lever. The outboard end of the spring must press against the lever body. If the return spring is not seated properly, you will not be able to adjust the reach of the lever blade.



- 3** Line up the cam and lever blade with the holes in the lever body, then press the pivot pin through the holes.



- 4** Apply a small amount of Loctite® Blue 242® onto the pinch bolt. Thread the pinch bolt into the lever body.



Loctite Blue 242

5 Tighten the pinch bolt.



6 Install the binder plug.



7 Press a new bladder into the reservoir cap so that the bladder is properly seated and flush with the reservoir cap.



8 Insert the reservoir cap and bladder assembly onto the lever body.



9 Tighten each reservoir cap bolt.



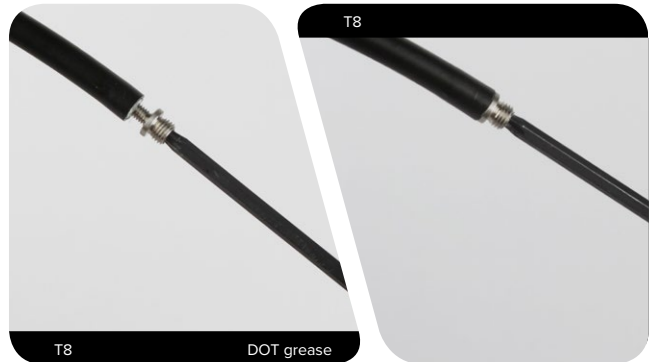
10 Cut the hose to install a new barb and compression fitting.



11 Apply DOT grease to the hose barb threads. Thread the hose barb into the hose until it is flush with the end of the hose.

NOTICE

Do not overtighten the hose barb. Overtightening may cause damage to the hose liner.



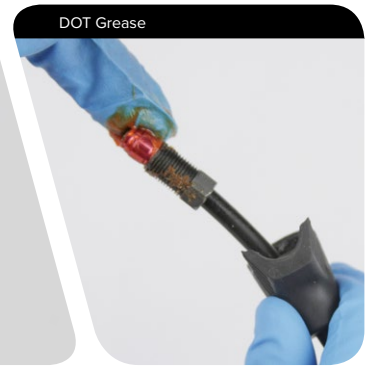
12 Install the compression nut onto the hose.



13 Thread the compression fitting over the hose barb, counter-clockwise, until it is flush or slightly lower than the hose barb.

The compression fitting is reverse threaded.

Apply DOT grease to the outside of the compression fitting and the threads of the compression nut.



14 Install the compression fitting and nut into the lever.



15 Tighten the compression nut.
Clean the lever.



⚠ CAUTION

Servicing your brakes removes all of the fluid from the system. You must bleed the brakes after you service the brake caliper and/or lever. For brake bleed, brake hose shortening, and brake pad replacement instructions, [visit www.sram.com/service](http://www.sram.com/service).

This publication includes trademarks and registered trademarks of the following companies:

TORX® is a registered trademark of Acument Intellectual Properties, LLC

Loctite® and 242® are registered trademarks of Henkel Corporation

SRAM[®]
www.sram.com



ASIAN HEADQUARTERS
SRAM Taiwan
No. 1598-8 Chung Shan Road
Shen Kang Hsiang, Taichung City
Taiwan R.O.C.

WORLD HEADQUARTERS
SRAM LLC
1000 W. Fulton Market, 4th Floor
Chicago, Illinois 60607
USA

EUROPEAN HEADQUARTERS
SRAM Europe
Paasbosweg 14-16
3862ZS Nijkerk
The Netherlands